

OREGON PUBLIC LAND CORNER REPORT / RESTORATION REPORT
Tillamook County Surveyor's Office

SECTION: 23 & 24 TOWNSHIP: 1 South RANGE: 10 West

COUNTY: Tillamook DATE: 4/2022

CORNER DESIGNATION: Quarter Section Corner Common to Sections 23 and 24, Township 1 South, Range 10 West; Willamette Meridian.	(Please check one)	
	x	Condition Report Only
		Restoration
		Rewitness
		Unrecorded
		Reset at surface
	Referenced Out	

Previous Rewitnesses, Restorations and Surveys, etc... A-119 (1936), A-120 (1944), A-121 (1930), A-122 (1944), A-203, A-983 (1962), A-1559, A-1579, B-38, B-113 (1944), B-143, B-150 (1949), B-2379 (2000), B-2738 (2001), B-2738 (2001), B-3685 (2015), G.L.O. PG. 19 (1856), S3 PG. 150 (1898), Rewitness bk. 4 pg. 70 (1949), Rewitness bk. 1 pg.86 (1949), Rewitness bk. 5 pg. 67 (1965), Rewitness card #317 (1972)

History, condition, and sources:
 In 1856 Samuel D. Snowden under contract with the General Land Office set a post for the quarter section corner common to sections 23 and 24 with 2 references. In 1913 (B-38) R.L Shreve set a 2" iron pipe for the ¼ corner. In 1949 (Rewitness bk. 1 pg. 86) W.E Anderson County Surveyor found iron pipe set for the ¼ corner and added 1 new accessory. In 1965 (Rewitness bk. 5 pg. 67) the County Surveyors Office found an iron pipe set for the ¼ corner and add 2 new accessories. In 1972 (Rewitness card #317) Tillamook County Surveyors office found the 2" iron pipe and replaced it with a 2.5" pipe with a 3" Tillamook County Brass cap in 10" tile and concrete stamped as shown hereon and added 1 new accessory. In 2022 the Tillamook County Surveyors office found the quarter corner in good condition .4' below surface and added 1 new accessory.

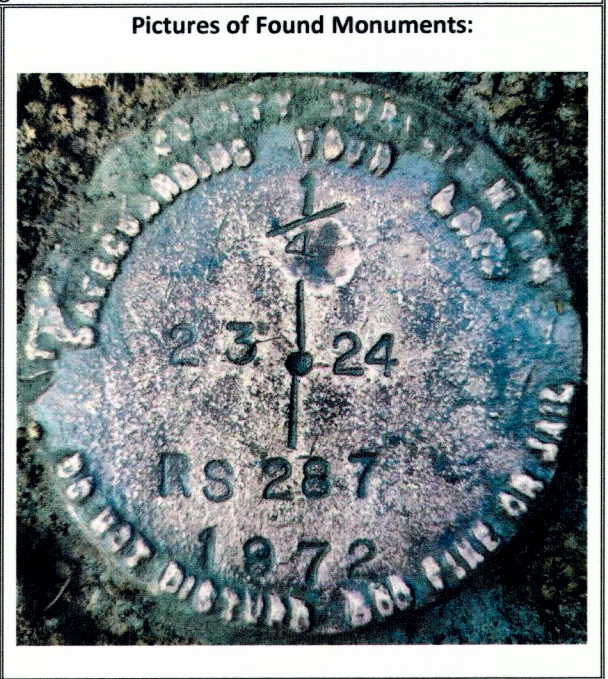
Not Found: (Rewitness card #317) power pole #E3-1739-15 S 73° W 20.95'
 Not Found: (Rewitness card #317) 1" iron pipe South 25'
 Not Found: (Rewitness card #317) 96" hat section post with yellow metal location tag South 2'

New accessories set:
 Set: 84" hat section post with yellow metal location tag attached South 14.1'

The Monument was tied directly using G.P.S. established control. The coordinates have been converted and are provided here in WGS 84, Latitude and Longitude.

Latitude: 45° 28' 14"
 Longitude: - 123° 51' 55"

Bearing Trees: No trees in acceptable distance.



Location: ± 1 mile West from the intersection of Hwy 101 and Goodspeed Rd. on the south side of roadway at corner.

Tillamook County Surveyor office: 1510 3rd Street Suite C, Tillamook, OR. 97141

Party Chief: Terry Jones, P.L.S. 2507, Survey Supervisor

Witnesses: Michael Rice, P.L.S. 86926, Tillamook County Surveyor
 Travis Porter, Survey Tech.

Notes: Digital images taken of monument and accessories.

SURVEYOR'S SEAL

REGISTERED
 PROFESSIONAL
 LAND SURVEYOR

Terry J. Jones

OREGON
 JULY 25, 1991
 TERRY L. JONES
 2507

RENEWAL DATE: JUNE 30, 2023

